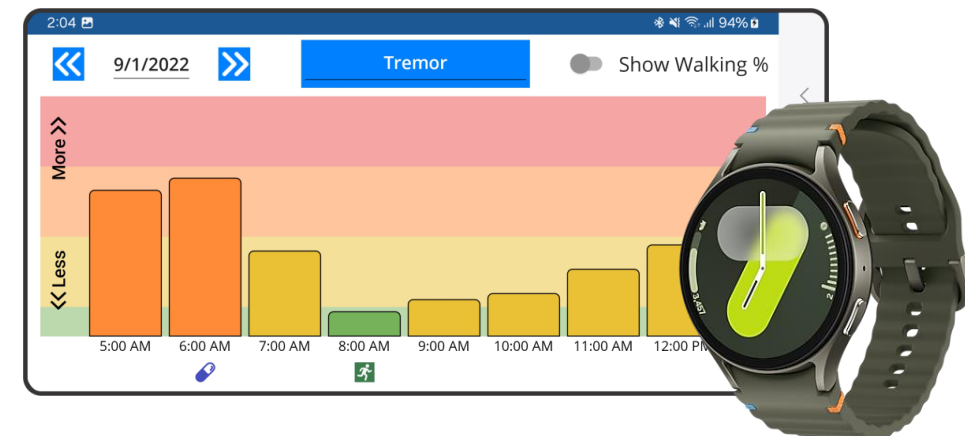




***Pioneering remote patient monitoring
for Parkinson's disease and other
movement disorders***

Dustin A. Heldman, Ph.D.
President and COO
dheldman@glneurotech.com
(216) 361-5410

KinesiaU™
MOTOR ASSESSMENT SYSTEM



Parkinson's is Difficult to Understand

Sporadic clinical visits provide limited information about the patient's daily experience



Therapy optimization requires repeated visits over a period of months to years, and then starts all over.

Parkinson's Market is Massive

US economic
burden of PD is \$52
billion per year

90% of PD patients
are on Medicare

Parkinson's was
~3.2% of the
Medicare budget

Does not include
international
markets or other
movement disorders

PD treatment
market is expected
to reach \$12.1
Billion by 2030

From Research to Remote Patient Monitoring

- ✓ Gold standard for Parkinson's disease and essential tremor
- ✓ Used commercially by thousands of patients and hundreds of clinical sites in research studies
- ✓ Continues to generate revenue in the research market
- ✓ Smartwatches now provide the opportunity to bring remote patient monitoring to movement disorders



Sample of Therapy and Clinical Customers

abbvie



Boston
Scientific

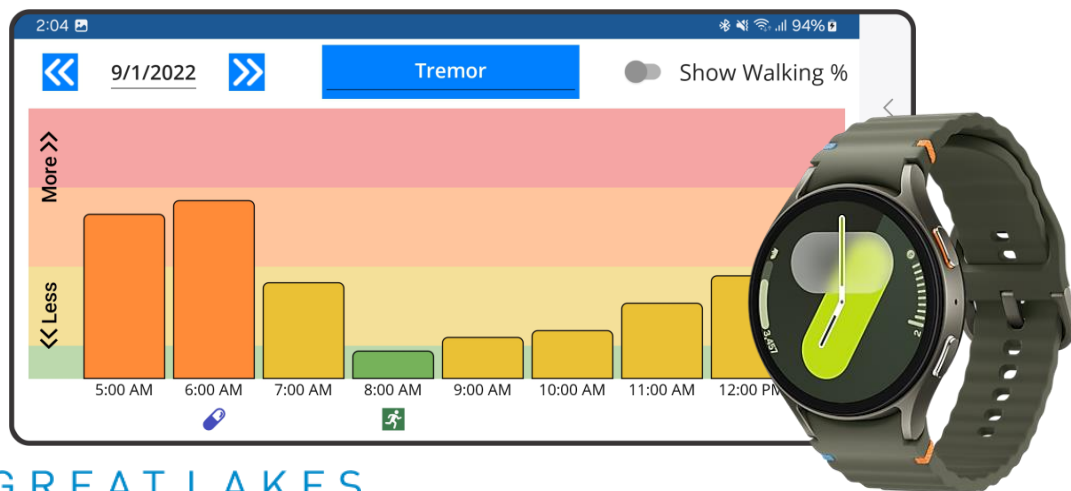


Validated Smartwatch Patient Monitoring

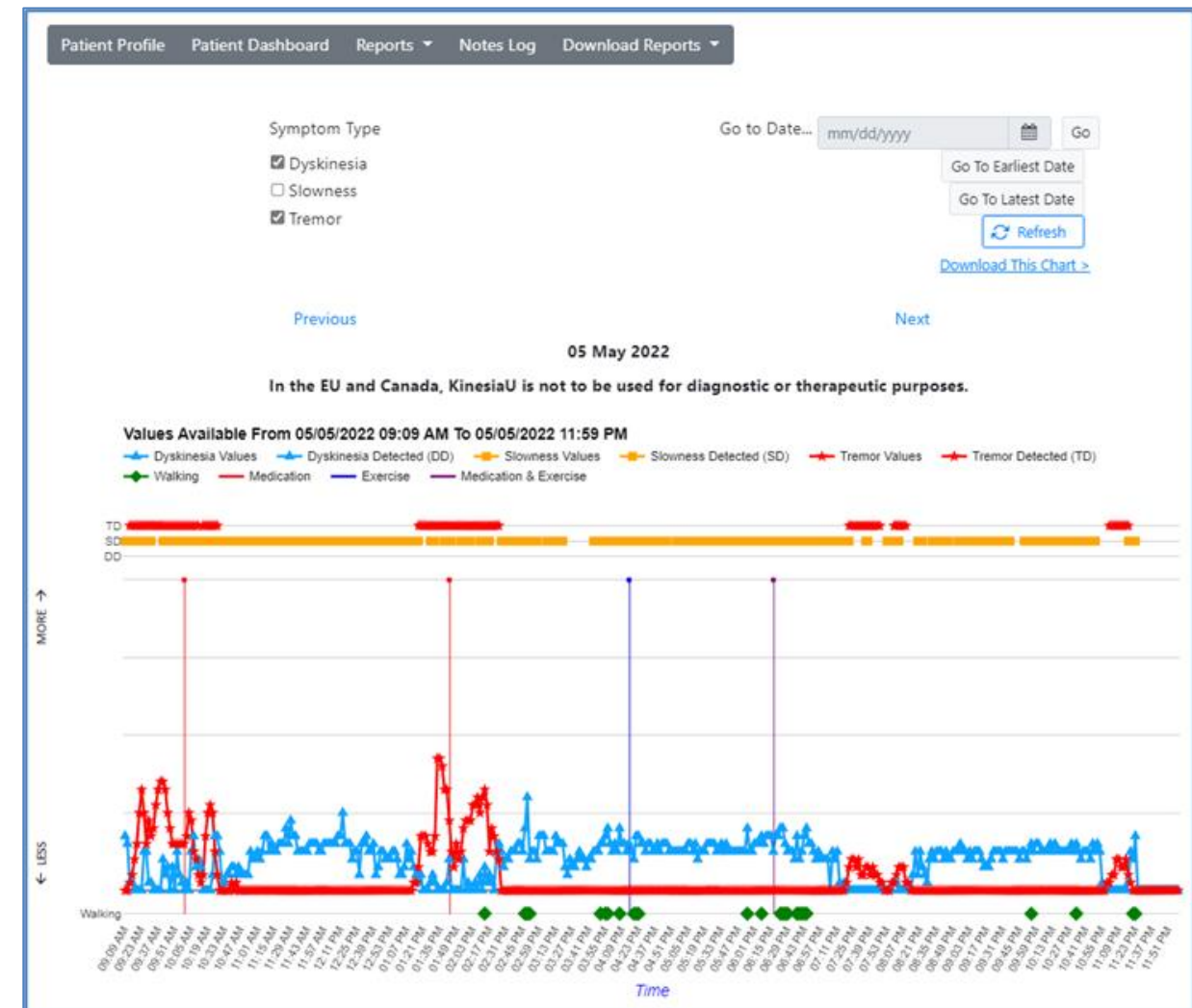


- Tracks motor symptoms (tremor, slowness, dyskinesia)
- Real-time access to data for patients and providers
- FDA-cleared and CE-marked
- Available for Apple and Android smartwatches

Patient Phone/Watch



Clinician Web Dashboard



Key Value Drivers



Optimize
therapy
remotely

Personalize
medication
schedules

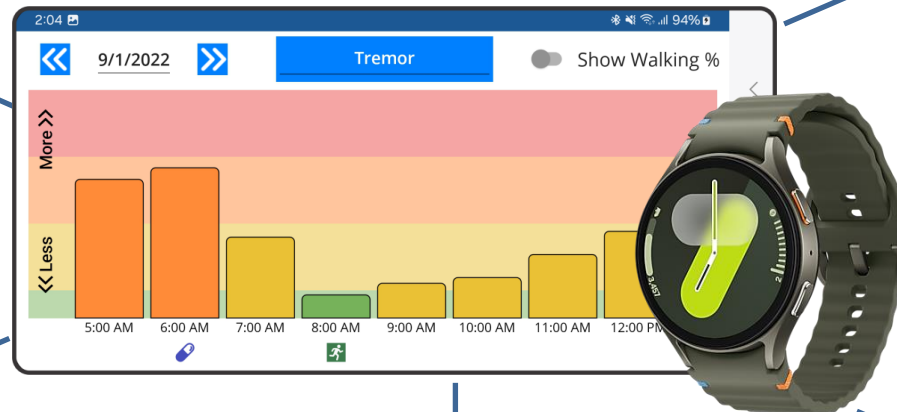
Reimbursable
as part of
remote patient
monitoring

Patient
becomes
engaged

Large database
of patient
outcomes

Identify
advanced
therapy
candidates

Increase
therapy
referrals



New Tools and Revenue Streams for Clinicians

KinesiaU enables remote patient monitoring for movement disorders

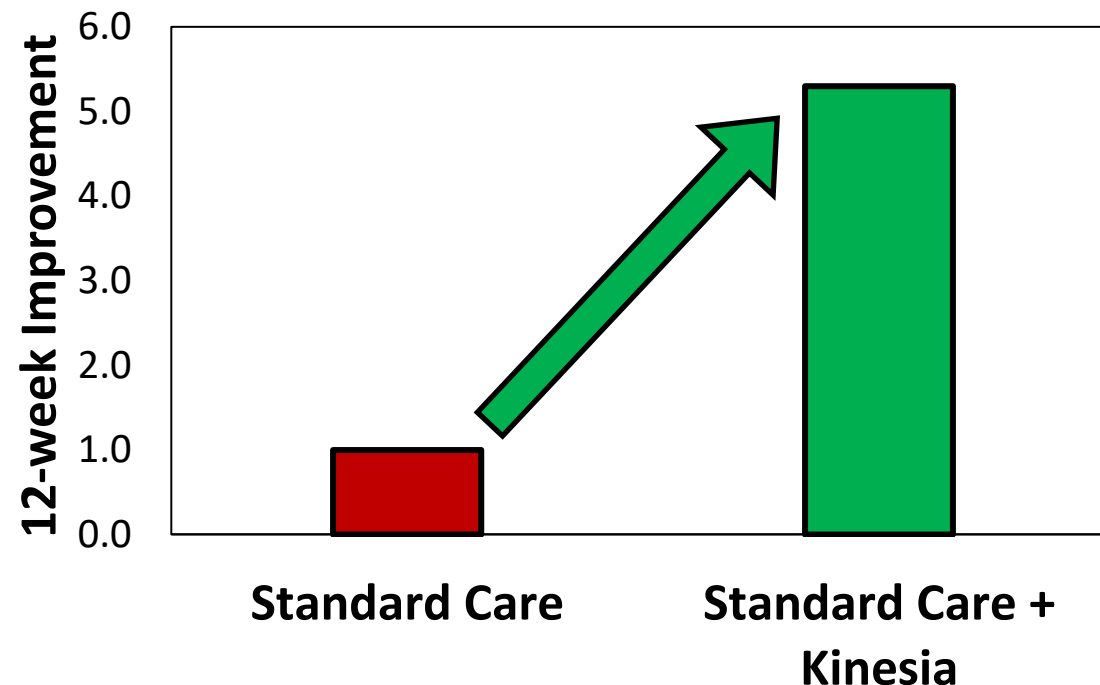
Initial patient training	Monthly remote monitoring	Clinician review of data	
\$19 per patient	\$56 per patient per month	\$50 per patient per month	\$41 three more times per patient per month

***Billable under CPT codes 99453, 99454, 99457, 99458, and 99091**

Real-World Evidence

- ✓ Used by over 20 pharma companies in the research market
- ✓ Optimize therapy remotely
- ✓ Improve engagement
- ✓ Increase therapy compliance
- ✓ Boost referrals for advanced therapies

KinesiaU Improves Clinical Outcomes



Published

Isaacson S, Boroojerdi B, Waln O, McGraw M, Kreitzman D, Klos K, Revilla F, Heldman D, Phillips M, Terricabras D, Markowitz M, Woltering F, Carson S, Truong D (2019) Effect of using a wearable device on clinical decision-making and motor symptoms in patients with Parkinson's disease starting transdermal rotigotine patch: A pilot study. *Parkinsonism and Related Disorders*.

Significant Patent Protection

Issued patents cover:

Sensor Based
Monitoring of
Movement Disorders

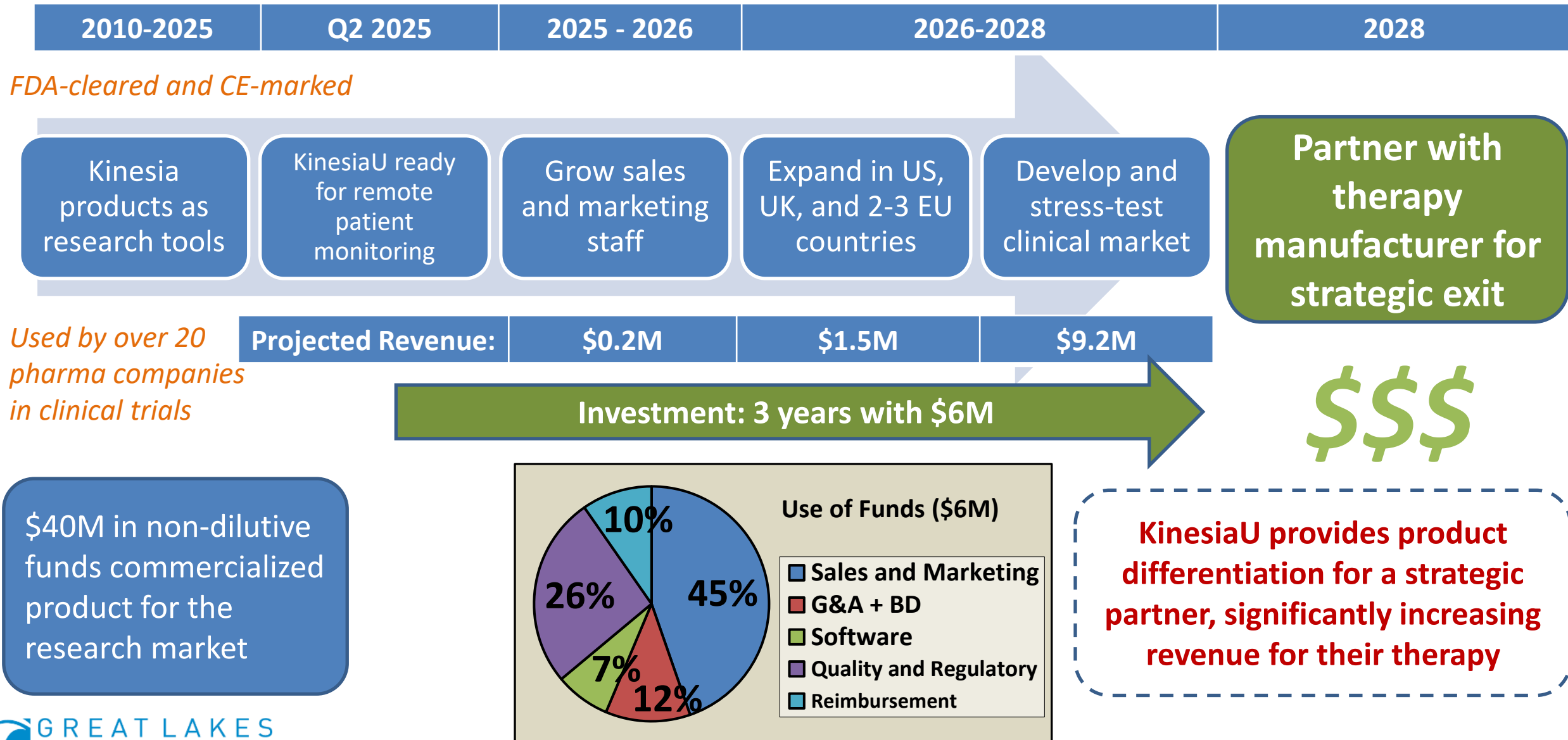
Wireless Data
Transfer and
Monitoring

Artificial Intelligence
for Quantifying
Symptom Severity

Adjusting Medication,
Drug Pump, or DBS
Based on Objective
Motor Assessment

Automated therapy
adjustment

Market Expansion and Exit Strategy



Great Lakes NeuroTechnologies Management Team



Dustin A. Heldman, PhD
President and COO



Robert N. Schmidt, MS, MBA, JD
Chairman and CEO



Brian M. Kolkowski, PhD, JD
Exec. VP & General Counsel



X 2



X 7



X 15



X 10



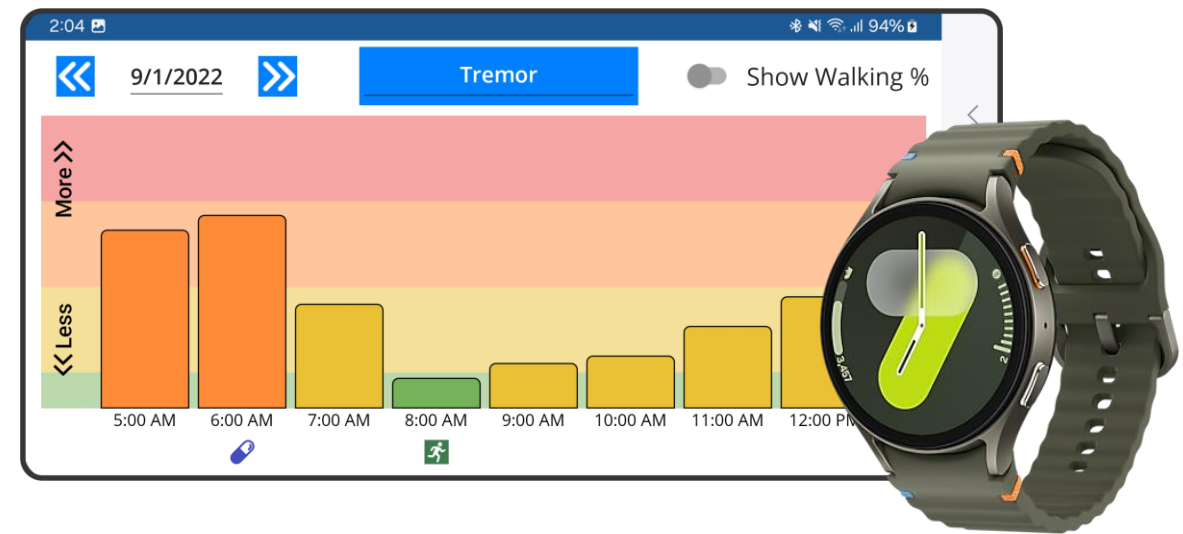
X 2



The Time for KinesiaU is now!

- ✓ Technology, regulatory, and IP protection risks eliminated
- ✓ Efficient therapy adjustment and personalized medication schedules
- ✓ Enables remote patient monitoring billing for movement disorders

KinesiaUTM
MOTOR ASSESSMENT SYSTEM



KinesiaU will be the standard of care for all people with Parkinson's

Questions?

Dustin A. Heldman, Ph.D.
President and COO
dheldman@glneurotech.com
(216) 361-5410
www.glneurotech.com

